



MADE IN ITALY



Marketed and Distributed by:



AHMEDABAD

389 Paiki, 18 Senior Complex, Chipa Society BRTS, Near Chandola Petrol Pump,
Danilimda, Ahmedabad - 380028, Gujarat, India
Tel: (+91-79) 2535 8664
Sales: (+91) 70414 95215/17 | Service: (+91) 70415 52202

MUMBAI

Ground Floor, Shop No 1, Rustomjee Central Park, Andheri-Kurla Road,
Chakala, Andheri (E), Mumbai - 400059, Maharashtra, India
Tel: (+91-22) 4964 9923
Sales: (+91) 70455 77700 / 93723 20887 | Service: (+91) 70415 52202

Email : info@classique-elements.co
Web : www.classique-elements.co
All India Toll Free for Service & Support : 1800-1020-332

FOLLOW US ON

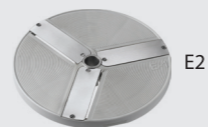




VEGETABLE CUTTER TV3000N

Machine for cutting, slicing fruit & vegetables in various shapes and sizes, grating cheese, dry bread, chocolate, hazelnuts, shredding carrots, celery, potatoes, apples, turnips, beets, mozzarella. TV3000N with casing & inlet in S.S. AISI 430 - safety microswitch on handle - double inlet for product insertion. Oval inlet size ~155x75 mm - round inlet size ø 56 mm.

Power	: 0.37 kW (0.5 HP)
Power Supply	: 230V/1N/50Hz
Speed	: 255 rpm
Dimensions	: 220 x 610 x 520(h) mm
Net / Gross Weight	: 22 / 24 Kg
Packaging Dimensions	: 300 x 620 x 580(h) mm



E2

Potatoes chips, turnips, cabbages, cucumbers, carrots, onions, mushrooms



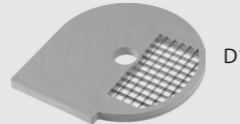
E10

Boiled potatoes & carrots, aubergines & beetroot



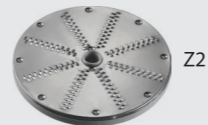
H8

Celery, courgettes, beetroot, radishes, carrots, potatoes & turnips



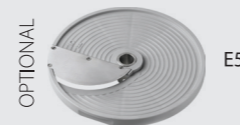
D10

Cubes for minestrone & fruit salads



Z2

Carrots, celery, potatoes, apples & turnips



OPTIONAL
E5

Tomatoes, lemons, oranges, apples, pineapples & grapefruits

IMMERSION BLENDER FX-40

Machine with ergonomic handle for a good and effortless holding fitted with mixer and whisk with speed regulator for obtaining different mixtures according to the tool used. Blending stick made entirely of stainless steel AISI 304, ideal for making soups, vegetable purees, sauces, batters, mayonnaise, tomato puree, pesto, etc.. Whisk made of S.S. AISI 304, ideal for making whipped cream, creams, omelets, soufflés, etc.

Power	: 0.4 kW (0.5 HP)
Power Supply	: 230V/1N/50-60Hz
Speed - Blender	: 2500÷11000 rpm
Speed - Whisk	: 250÷1500 rpm
Container Capacity	: 60 L
Dimensions	: 170 x 120 x 660/740(h) mm (with whisk/mixer)
Net / Gross Weight	: 4.5 / 6 Kg
Packaging Dimensions	: 490 x 390 x 170(h) mm



MEAT MINCER TR-8D



Polished aluminium casing and S.S. hopper. Aluminium grinding unit - meat inlet ø 52 mm - oiled gear motor - equipped with enterprise system with S.S. plate (holes ø 6 mm) and self-sharpening S.S. knife.

Power	: 0.37 kW (0.5 HP)
Power Supply	: 230V/1N/50Hz
Production	: 20÷50 Kg/h
Dimensions	: 290 x 270 x 350(h) mm
Net / Gross Weight	: 9 / 10 Kg
Packaging Dimensions	: 320 x 270 x 380(h) mm

MEAT MINCER 12-B



Polished aluminium casing and S.S. hopper. Meat inlet ø 52 mm - oiled gear motor - equipped with enterprise system with S.S. plate (holes ø 6 mm) and self-sharpening S.S. knife.

Power	: 0.75 kW (1 HP)
Power Supply	: 230V/1N/50Hz
Production	: 100÷160 Kg/h
Dimensions	: 250 x 400 x 500(h) mm
Net / Gross Weight	: 21 / 23 Kg
Packaging Dimensions	: 470 x 300 x 480(h) mm

MEAT MINCER 22-TE



Polished aluminium structure with S.S. hopper - Machine with a completely removable grinding unit that allows it to be placed in the refrigerator without having to remove minced meat residues after each use in accordance with the HACCP hygiene standards - the grinding unit in S.S. AISI 304 can be washed in the dishwasher - low voltage controls - meat inlet ø 52 mm - oiled gear motor.

Power	: 1.1 kW (1.5 HP)
Power Supply	: 230V/1N/50Hz
Production	: 150÷250 Kg/h
Dimensions	: 450 x 290 x 520(h) mm
Net / Gross Weight	: 25 / 27 Kg
Packaging Dimensions	: 540 x 300 x 480(h) mm

ECO LINE SLICERS ECO220 / ECO250



Slicing machine for cold cuts, cheeses, meats, etc. Light painted aluminium alloy casing - tray block with "Easy Clean" system for an easier cleaning - blade protection fixed ring - cutting thickness up to 14÷16 mm - fixed sharpener with a pair of grinders to sharpen the blade - Removable sharpener included (inserted in the lower compartment of the machine) for the ECO220 model.

	ECO220	ECO250
Power	: 0.14 kW (0.19 HP)	0.14 kW (0.19 HP)
Power Supply	: 230V/1N/50Hz	230V/1N/50Hz
Blade Size	: 220 mm	250 mm
Dimensions	: 530 x 480 x 320(h) mm	530 x 480 x 375(h) mm
Net / Gross Weight	: 12.5 / 14 Kg	14 / 15 Kg
Packaging Dimensions	: 480 x 545 x 410(h) mm	